



8540 Dice Road, Santa Fe Springs, CA 90670 USA

Ph (562) 698-0916 Fax (562) 696-4971

"Since 1948"

"Specializing in Custom Injection Molding & Interior Aircraft Hardware"

Aircraft Circuit Breaker Lockout Rings, Tags and Identification Caps

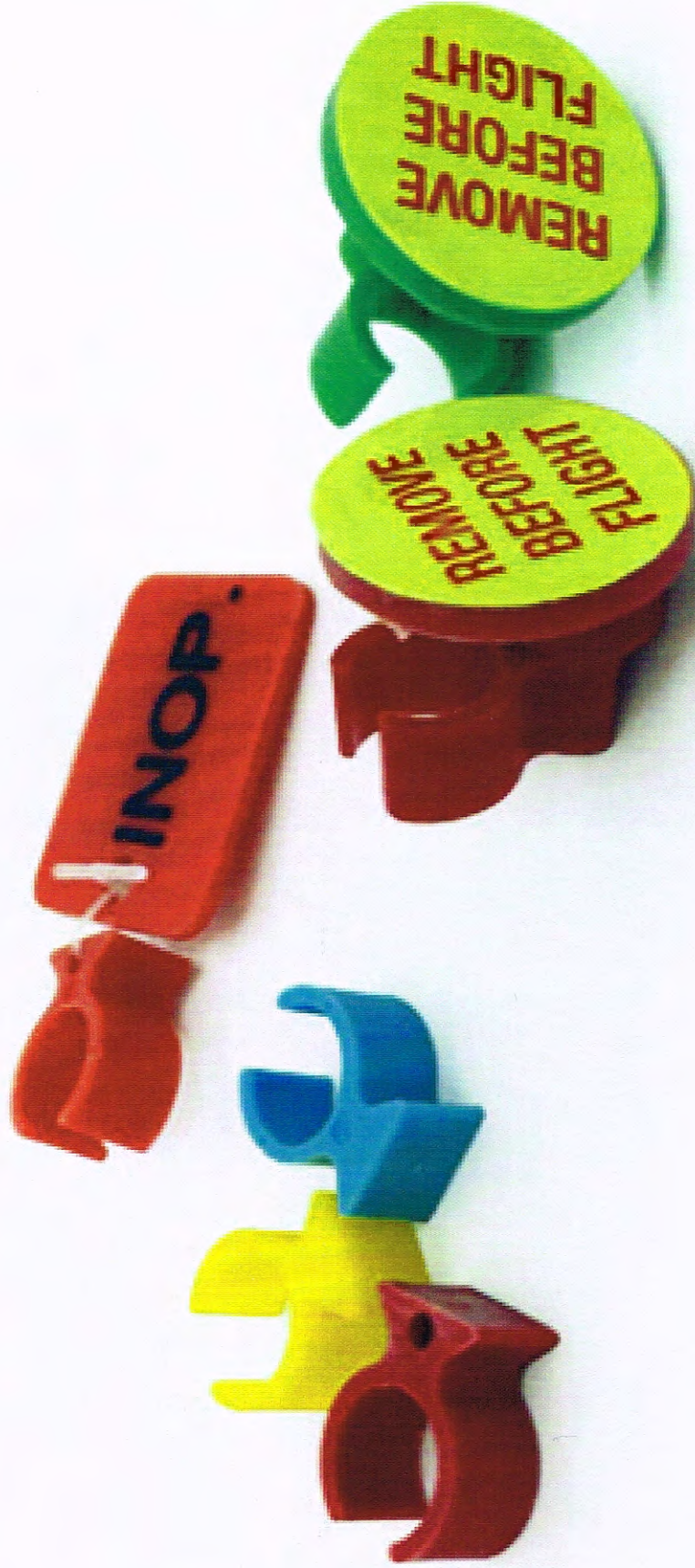
PACO has been the manufacturer and leader in Aircraft Circuit Breaker Lockout Rings and Tags for over 50 years.

PACO is currently the only manufacturer in the world that offers FAA-PMA approved and FAA "Maintenance Support Hardware" Circuit Lockout Rings, Tags and Caps.

Please look at our various designs. We can also help you with custom colors and designs if needed.



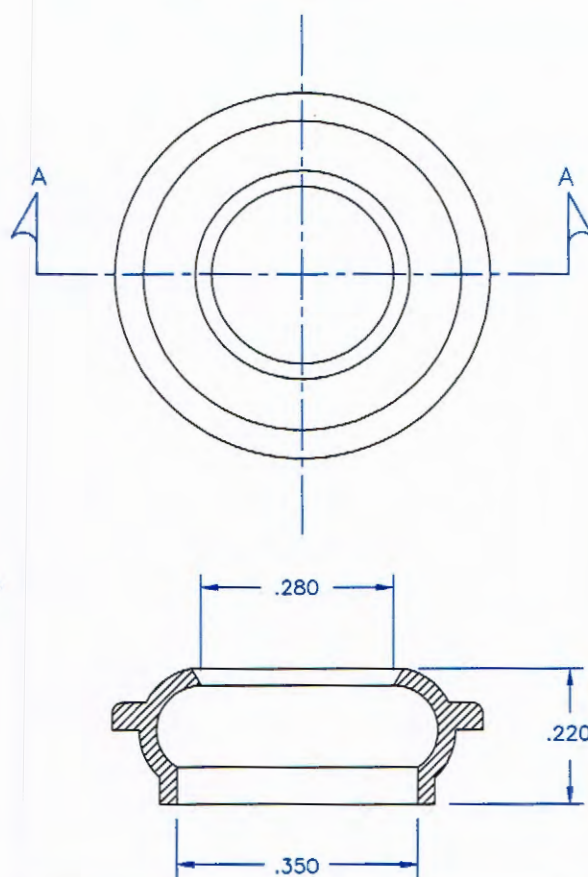
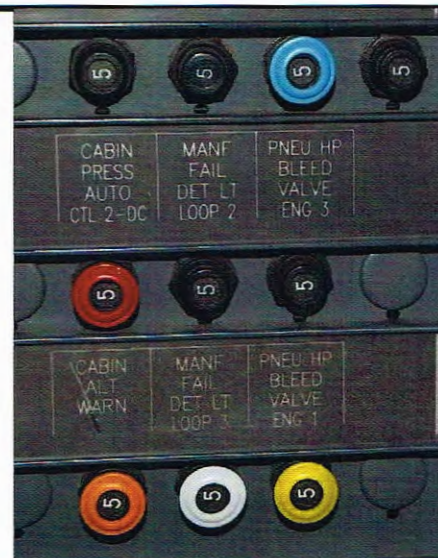
8540 Dice Road Santa Fe Springs, CA 90670
562-698-0916



Custom Aircraft Injection Molding

[Learn More](#)

PART NO.	COLOR	MATERIAL
PE7000-1	WHITE	POLYETHYLENE PER PACO SHOP TRAVELER
PE7000-2	ORANGE	
PE7000-3	RED	
PE7000-4	BLUE	
PE7000-5	YELLOW	
PE7000-6	BLACK	
PE7000-7	GRAY	
PE7000-8	GREEN	
PE7000-9		
PE7000-10		



NOTES

1. CAP IS CAPABLE OF BEING INSTALLED AND REMOVED FREE- HANDED.
2. INSTALLATION OR REMOVAL WILL NOT DAMAGE CIRCUIT BREAKER OR PANEL.
3. COLORED CAPS CAN BE USED TO FLAG DESIGNATED CIRCUIT BREAKERS. (EXAMPLE: FLIGHT CHECK)
4. CAP'S DESIGN PREVENTS VIBRATION ON CIRCUIT BREAKER, AND IMPROVES GRIP WHEN USED.
5. OTHER COLORS MAY BE AVAILABLE ON REQUEST.



8540 DICE ROAD SANTA FE SPRINGS, CA 90670 USA
 PHONE (562)698-0916 WWW.PACOPLASTICS.COM

FAA-STANDARD
 "MAINTENANCE SUPPORT HARDWARE"

CIRCUIT BREAKER
 BUTTON CAP

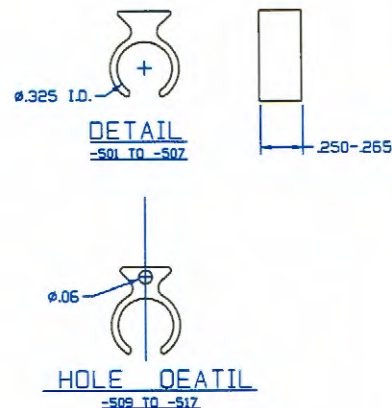
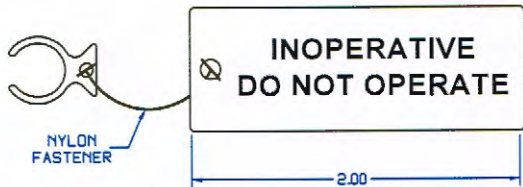
PE7000-



DASH NO.	COLOR	WITH HOLE
CIRCUIT BREAKER RING ONLY		
-1	NATURAL	NO
-501	RED	NO
-503	YELLOW	NO
-505	BLUE	NO
-507	BLACK	NO
CIRCUIT BREAKER RING W/ HOLE ONLY		
-509	NATURAL	YES
-511	RED	YES
-513	YELLOW	YES
-515	BLUE	YES
-517	BLACK	YES
CIRCUIT BREAKER RING & TAG REMOVE BEFORE FLIGHT		
-519	NATURAL	YES
-521	RED	YES
-523	YELLOW	YES
-525	BLUE	YES
-527	BLACK	YES
CIRCUIT BREAKER RING & TAG INOPERATIVE DO NOT OPERATE		
-529	NATURAL	YES
-531	RED	YES
-533	YELLOW	YES
-535	BLUE	YES
-537	BLACK	YES



REMOVE BEFORE FLIGHT



NOTES: UNLESS OTHERWISE SPECIFIED

1. THIS INOPERATIVE RING IS CAPABLE OF BEING INSTALLED AND REMOVED FREE-HANDED.
2. REMOVAL OF THE INOPERATIVE RING WILL NOT DAMAGE THE CIRCUIT BREAKER AND ELIMINATES DAMAGE TO THE CIRCUITBREAKER PANEL.
3. TAG COLOR TO BE "RED ONLY" FED STD 595 #310302.
4. INFORMATION ON TAG IS HOT STAMPED WHITE ON ONE SIDE ONLY.
5. MATERIAL: NYLON 6/6 LP-41D.
6. PACO PLASTICS HAS "FMA-PMA" APPROVAL/ FAA-APPROVED STANDARD "MAINTENANCE SUPPORT HARDWARE"
7. PART NUMBER IS THE SAME AS S-4933959



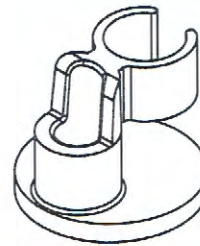
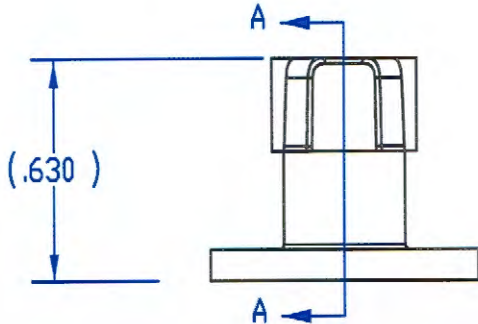
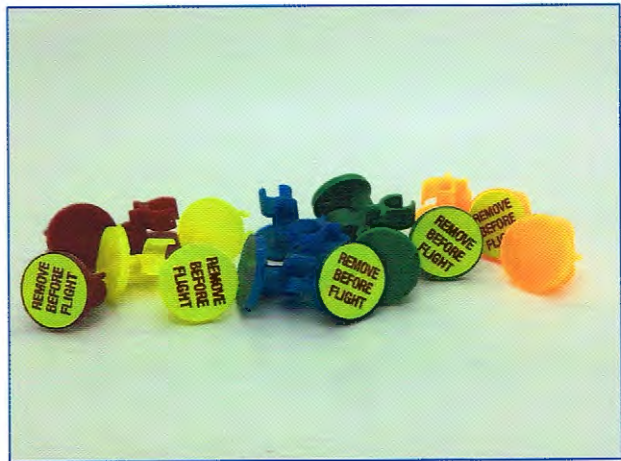
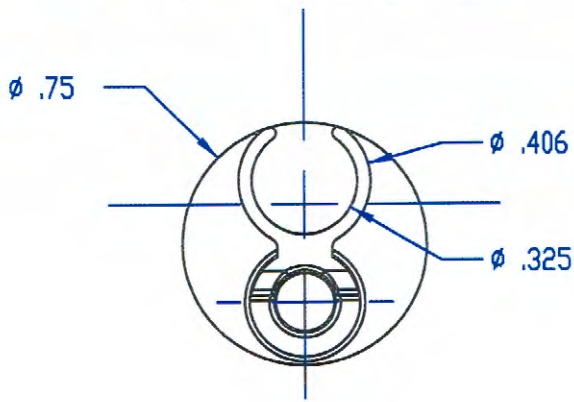
8540 Dice Road Santa Fe Springs, CA 90670 USA
 Phone (562) 698-0916 www.pacoplastics.com

PACO PROPRIETARY PART
DO NOT DUPLICATE. CATALOG SHEET

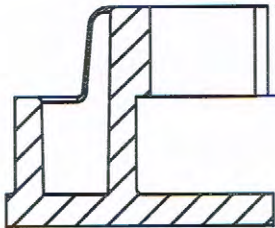
For inquiries: g.dowden@pacoplastics.com

RING- INOPERTAIVE CIRCUIT BREAKER

S4933959



ISOMETRIC VIEW



FAA "MAINTENANCE SUPPORT HARDWARE"
BOEING SWPM SECTION 20-00-10 TABLE 1

PART NO.	TAG COLOR	STICKER INFORMATION
PE7014-1	GREEN	⚠ REMOVE BEFORE FLIGHT
PE7014-2	GREEN	⚠ "INOP DO NOT OPERATE"
PE7014-3	GREEN	⚠ BLANK or STICKER INFORMATION TO BE PROVIDED BY CUSTOMER
PE7014-4	NEON YELLOW	⚠ REMOVE BEFORE FLIGHT
PE7014-5	NEON YELLOW	⚠ "INOP DO NOT OPERATE"
PE7014-5A	NEON YELLOW	⚠ "INOP MEL"
PE7014-6	NEON YELLOW	⚠ BLANK or STICKER INFORMATION TO BE PROVIDED BY CUSTOMER
PE7014-7	BRIGHT RED	⚠ REMOVE BEFORE FLIGHT
PE7014-8	BRIGHT RED	⚠ "INOP DO NOT OPERATE"
PE7014-9	BRIGHT RED	⚠ BLANK or STICKER INFORMATION TO BE PROVIDED BY CUSTOMER
PE7014-10	NEON ORANGE	⚠ REMOVE BEFORE FLIGHT
PE7014-11	NEON ORANGE	⚠ "INOP DO NOT OPERATE"
PE7014-12	NEON ORANGE	⚠ BLANK or STICKER INFORMATION TO BE PROVIDED BY CUSTOMER
PE7014-13	NEON BLUE	⚠ REMOVE BEFORE FLIGHT
PE7014-14	NEON BLUE	⚠ "INOP DO NOT OPERATE"
PE7014-15	NEON BLUE	⚠ BLANK or STICKER INFORMATION TO BE PROVIDED BY CUSTOMER

NOTES: UNLESS OTHERWISE SPECIFIED

- MATERIAL NYLON 6/6 101L
- THIS INOPERATIVE RING IS CAPABLE OF BEING INSTALLED AND REMOVED FREE HANDED.
REMOVAL OF THIS RING WILL NOT DAMAGE THE CIRCUIT BREAKER OR PANEL.
- COLOR FOR RING; SEE TAG COLOR COLUMN IN TAB BLOCK ON PG. 2
- ⚠ COLOR OF STICKER IS NEON YELLOW WITH RED WRITING: "REMOVE BEFORE FLIGHT"
- ⚠ COLOR OF STICKER IS NEON YELLOW WITH RED WRITING: "INOP DO NOT OPERATE"
- ⚠ COLOR OF OF STICKER IS NEON YELLOW WITH RED WRITING: "INOP MEL"
- ⚠ C.B. RING/TAG HAS NO STICKER OR CUSTOM TAG STICKER INFORMATION TO BE PROVIDED BY CUSTOMER.
IF CUSTOM TAG IS USED THE PART NUMBER WILL BE FOLLOWED WITH AN "S" EX: PE7014-6S.



8540 DICE ROAD SANTA FE SPRINGS, CA 90670 USA
PHONE (562)698-0916 WWW.PACOPLASTICS.COM

CIRCUIT BREAKER
LOCKOUT & LABEL

PE7014-

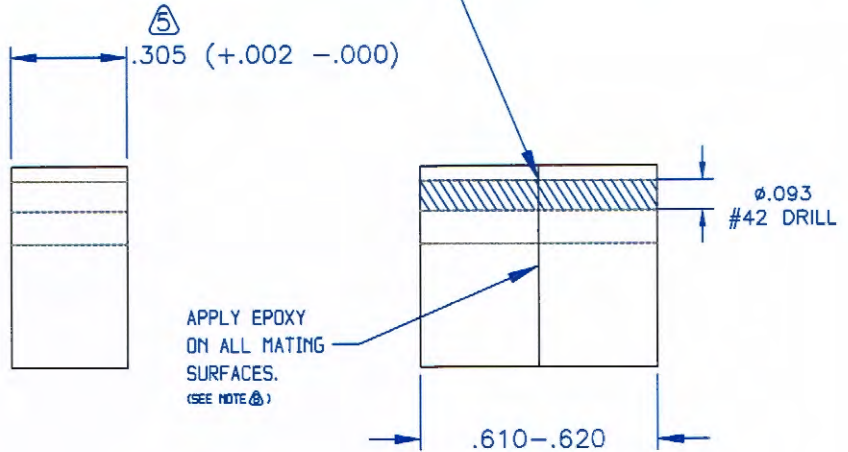
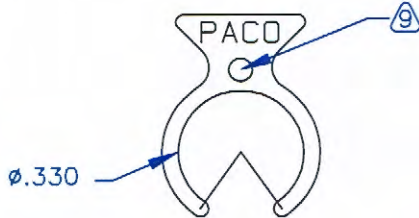
REV D



PART NUMBER	DESCRIPTION	
PE7017-519	WHITE	Ⓜ
PE7017-517	BLACK	Ⓜ
PE7017-515	BRIGHT BLUE	Ⓜ
PE7017-513M	NEON YELLOW	Ⓜ
PE7017-513	NEON YELLOW	
PE7017-511M	BRIGHT RED	Ⓜ
PE7017-511	BRIGHT RED	
PE7017-509	WHITE	
PE7017-507	BLACK	
PE7017-505	BLUE	
PE7017-503	NEON YELLOW	
PE7017-501	BRIGHT RED	



THRU HOLE
ATTACH DRIVE
SCREW (SEE NOTE Ⓜ)



-511M & -513M ONLY

NOTES: UNLESS OTHERWISE SPECIFIED

1. THE INOPERATIVE RING (COLLAR) IS CAPABLE OF BEING INSTALLED AND REMOVED FREE HANDED.
2. REMOVAL OF THE RING WILL NOT DAMAGE THE CIRCUIT BREAKER OR PANEL.
3. MATERIAL: DUPONT ZYTEL NYLON 6/6 101 SERIES NATURAL.
4. PART IS FAA-STANDARD "MAINTENANCE SUPPORT HARDWARE"
- Ⓜ RING IS FOR USE ON LONG EXTENSION TYPE CIRCUIT BREAKERS & RECESSED BREAKER PANELS (EXAMPLES: GULFSTREAM G SERIES, DASSULT FALCON, CESSNA CITATION, HAWKER 800/900 & LEARJETS STYLE PANELS ALONG WITH COMMERCIAL TYPE AIRCRAFT)
6. PACO PROPRIETARY PART.
7. "PACO" TO BE RAISED ON PART APPROX AS SHOWN. TEXT .055 HIGH.
- Ⓜ RING IS FOR USE ON EXTRA LONG EXTENSION TYPE CIRCUIT BREAKERS & RECESSED BREAKER PANELS. PUT "M" AFTER THE DASH NUMBER (EXAMPLE: -511M) FOR TWO CIRCUIT BREAKER LOCKOUT RINGS THAT ARE BONDED TOGETHER USING 18-8 STAINLESS #2 1/2 DRIVE SCREW ALONG WITH EC-2216 B/A EPOXY. APPLY TO ALL MATING SURFACES.
- Ⓜ RING HAS HOLE

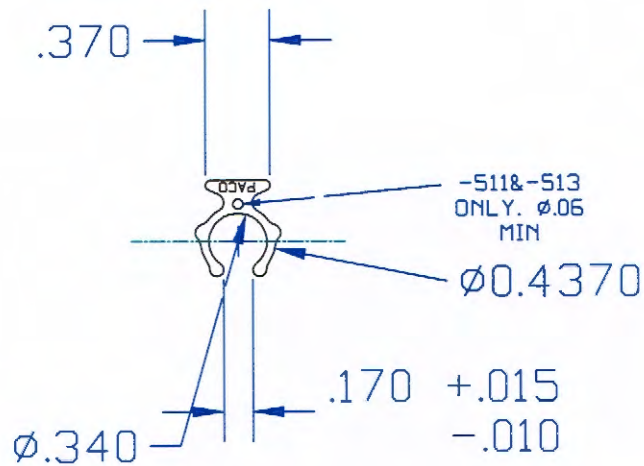
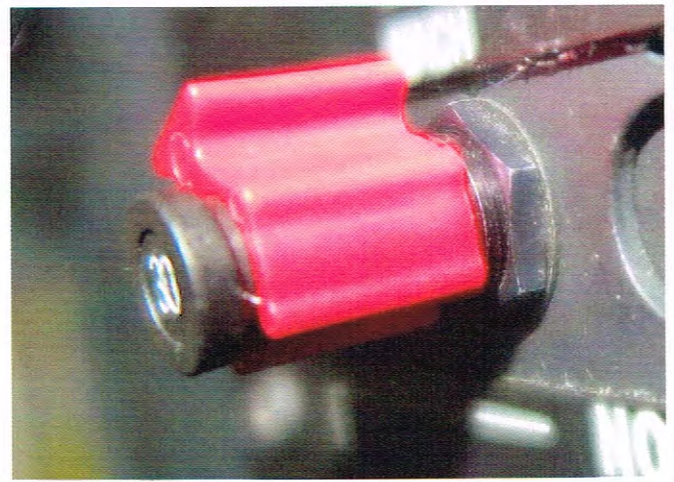


8540 DICE ROAD SANTA FE SPRINGS, CA 90670 USA
PHONE (562)698-0916 WWW.PACOPLASTICS.COM

**INOPERATIVE RING—
CIRCUIT BREAKER LONG NECK EXTENDED
BREAKER**

PE7017—

REV B



-501	BRIGHT RED
-503	NEON YELLOW
-511	BRIGHT RED
-513	NEON YELLOW

NOTES: UNLESS OTHERWISE SPECIFIED

1. THE INOPERATIVE RING (COLLAR) IS CAPABLE OF BEING INSTALLED AND REMOVED FREE HANDED.
2. REMOVAL OF THE RING WILL NOT DAMAGE THE CIRCUIT BREAKER OR PANEL.
3. MATERIAL: DUPONT ZYTEL NYLON 6/6 101 NATURAL.
4. PART IS FAA-STANDARD "MAINTENANCE SUPPORT HARDWARE"
5. RING IS FOR USE ON LONG EXTENSION TYPE CIRCUIT BREAKERS & RECESSED BREAKER PANELS
6. PACO PROPRIETARY PART.
7. "PACO" TO BE RAISED ON PART APROX AS SHOWN. TEXT .055 HIGH.

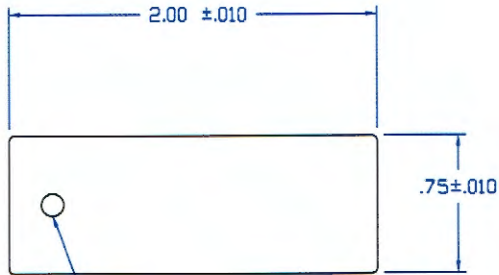
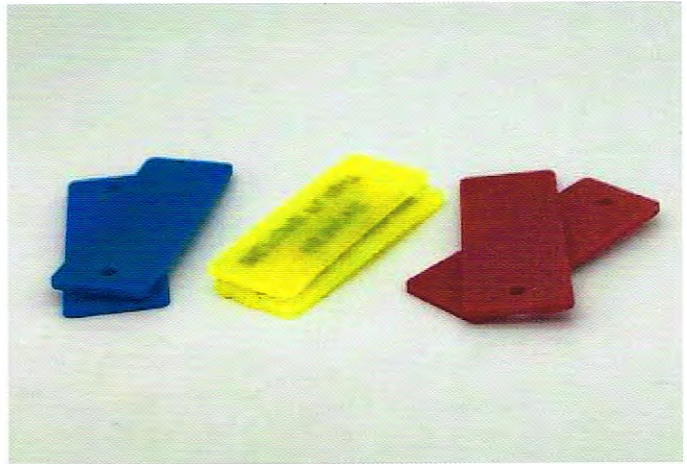


8540 DICE ROAD SANTA FE SPRINGS, CA 90670 USA
PHONE (562)698-0916 WWW.PACOPLASTICS.COM

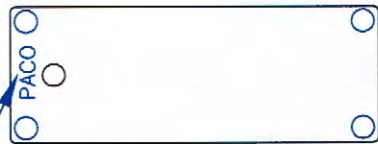
**INOPERATIVE RING—
CIRCUIT BREAKER LONG NECK EXTENDED
BREAKER**

PE7021 —

REV N/C



EXACT HOLE LOCATION
DETERMINED BY SAMPLE.



ENGRAVED PER SAMPLE PART

ASSEMBLY PART NUMBER	COLOR	TAG
PE7035-1R	COLOR BRIGHT RED PACO #93	BLANK
PE7035-1Y	COLOR NEON YELLOW PACO #169	BLANK
PE7035-1B	COLOR BRIGHT BLUE PACO #173	BLANK

NOTES: UNLESS OTHERWISE SPECIFIED

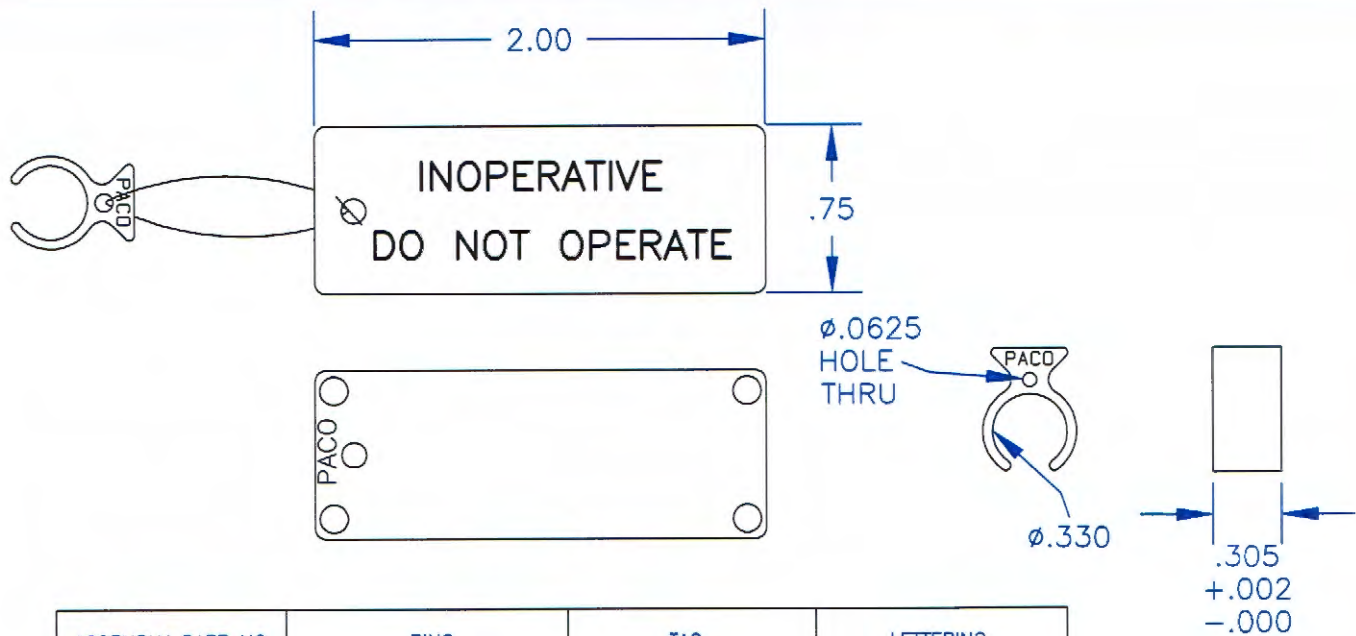
1. THE TAG CAN BE SOLD AS A BLANK OR AS PARTS OF AN ASSEMBLY.
2. MATERIAL: NYLON PER PACO PSP 1.16-1 OR 1.16-2
3. PART IS CONSIDERED FAA-STANDARD "MAINTENANCE SUPPORT HARDWARE"
4. PACO PROPRIETARY PART
5. "PACO" TP BE RAISED ON THE TAG PART AS SHOWN
6. WHITE OR BLACK HOT STAMPED LETTERING TO BE ON ONE SIDE ONLY.



8540 DICE ROAD SANTA FE SPRINGS, CA 90670 USA
PHONE (562)698-0916 WWW.PACOPLASTICS.COM

TAG

PE7035-



ASSEMBLY PART NO.	RING	TAG	LETTERING
PE7036-1	PE7017-511 BRIGHT RED PACO #93	PE7035-1R BRIGHT RED	WHITE- "INOPERATIVE DO NOT OPERATE"
PE7036-2	PE7017-511 BRIGHT RED PACO #93	PE7035-1R BRIGHT RED	WHITE- "REMOVE BEFORE FLIGHT"
PE7036-3	PE7017-513 BRIGHT YELLOW PACO #169	PE7035-1Y BRIGHT YELLOW	BLACK- "INOPERATIVE DO NOT OPERATE"
PE7036-4	PE7017-513 BRIGHT YELLOW PACO #169	PE7035-1Y BRIGHT YELLOW	BLACK- "REMOVE BEFORE FLIGHT"
PE7036-5	PE7017-515 BRIGHT BLUE PACO #173	PE7035-1R BRIGHT BLUE	WHITE- "INOPERATIVE DO NOT OPERATE"
PE7036-6	PE7017-515 BRIGHT BLUE PACO #173	PE7035-1R BRIGHT BLUE	WHITE- "REMOVE BEFORE FLIGHT"
PE7036-7	PE7017-517 BLACK PACO #	PE7035-1R BRIGHT RED	WHITE- "INOPERATIVE DO NOT OPERATE"
PE7036-8	PE7017-517 BLACK PACO #	PE7035-1R BRIGHT RED	WHITE- "REMOVE BEFORE FLIGHT"
PE7036-9	PE7017-519 WHITE PACO #	PE7035-1R BRIGHT RED	WHITE- "INOPERATIVE DO NOT OPERATE"
PE7036-10	PE7017-519 WHITE PACO #	PE7035-1R BRIGHT RED	WHITE- "REMOVE BEFORE FLIGHT"

NOTES: UNLESS OTHERWISE SPECIFIED

1. THIS INOPERATIVE RING(COLLAR) IS CAPABLE OF BEING INSTALLED AND REMOVED FREE-HANDED.
2. REMOVAL OF THE RING WILL NOT DAMAGE THE CIRCUIT BREAKER OR PANEL.
3. MATERIAL: NYLON PER PACO PSP 1.16 OR 1.12
4. PART IS CONSIDERED FAA-STANDARD "MAINTENANCE SUPPORT HARDWARE"
5. RING IS LARGER THAN THE S4933959 SERIES LOCKOUT RING WHICH CAN BE USED ON BOTH STANDARD AND LONG EXTENSION BREAKERS ALONG WITH BREAKRES THAT ARE REINSTALLED IN RECESSED PANELS.
6. PACO PROPRIETARY PART
7. "PACO" TO BE RAISED ON RING AND TAG PART AS SHOWN



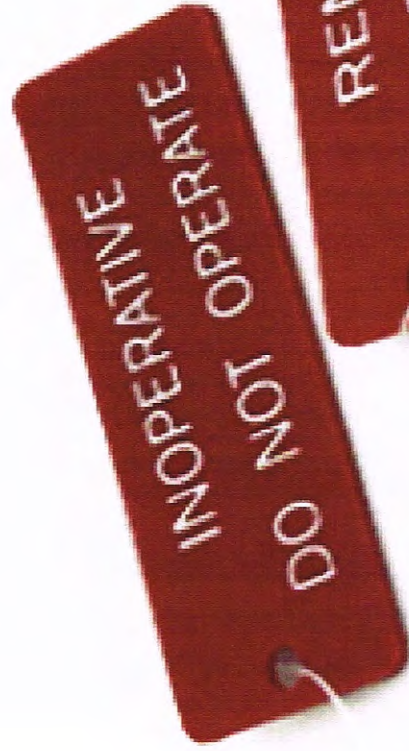
8540 DICE ROAD SANTA FE SPRINGS, CA 90670 USA
PHONE (562)698-0916 WWW.PACOPLASTICS.COM

**INOPERATIVE C.B.
RING & TAG**

PE7036-



8540 Dice Road Santa Fe Springs, CA 90670
562-698-0916



ISO 9001/AS 9100
Certified Supplier

[Learn More](#)

CABIN
PRESS
AUTO
CTL 1-DC

MANF
FAIL
DET LT
LOOP 1

PNEU HP
BLEED
VALVE
ENG 2

CAC
OVERHEAT
CONT



CABIN
PRESS
AUTO
CTL 2-DC

MANF
FAIL
DET LT
LOOP 2

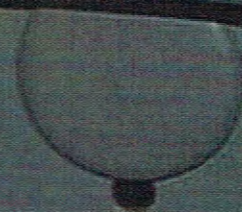
PNEU HP
BLEED
VALVE
ENG 3



CABIN
ALT
WARN

MANF
FAIL
DET LT
LOOP 3

PNEU HP
BLEED
VALVE
ENG 1



5

5

5

CABIN
ALT
WARN

MANF
FAIL
DET LT
LOOP 3

PNEU HP
BLEED
VALVE
ENG 1

DO NOT OPERATE
INOPERATIVE

5

DO NOT OPERATE
INOPERATIVE

11
13
COMPARTMEN
AUST FAN

FUEL
FLOW
IND
ENG 3

PNEU
SYS
CONT
ENG 1

PNEU
SYS
MONITOR
ENG 1

MANF
FAILURE
DET
LOOP 3

REVE
CON

FIRE AGENT
DISCHARGE
LT
ENG 1

ENG
FAIL
LTS

CAC
OVERHEAT
CONT

PNEU HP
BLEED
VALVE
ENG 2

MANF
FAIL
DET LT
LOOP 1

CABIN
PRESS
AUTO
CTL 1-DC

ENG 1

FedEx
DO NOT OPERATE
04
FedEx M

ENG
START
VALVE
LTS

PNEU HP
BLEED
VALVE
ENG 2

MANF
FAIL
DET LT

CABIN
PRESS
AUTO



